



Titan Tube is the ultimate LED tube for filmmakers, studios, event technician and any creative person. It emits powerful, tunable whites with ultra-high color rendering as well as colored light which can be applied to individual pixels or the whole tube. The tube offers unlimited range of usage; indoor or outdoor, AC-powered or on battery, on the go with the AsteraApp, with wired or wireless DMX.



Max 20h



Wireless DMX



IP65



App

SPECIFICATIONS

Please note that due to a component shortage we had to do internal changes to Titan Tube and units manufactured after September 2021 have the BTB feature built-in and are now called FP1-BTB.

	Titan Tube	Titan Tube BTB
Order Code	FP1	FP1-BTB
LED Engine	Titan LED Engine	
Colors	RGBMintAmber	
Total LED Power	72 W	
LED Power Draw	48 W	
Luminous Flux 3200K	2 535 Lumens	
Luminous Flux 4000K	2 900 Lumens	
Light Output 3200 K @ 1m	708 Lux	
Light Output 4000 K @ 1m	785 Lux	
CRI (Ra)/ TLCI 3200- 6500 K*	≥96	
Beam Angle	135° x 115°	
Field Angle	175° x 160°	
Strobe	0 - 25 Hertz	
Pixels	16	
Battery Runtime	up to 20 hours	
Battery Runtime Max Brightness	1h 45m	
Battery Lifetime	70 % after 300 cycles	
Charging Time (nominal)	3 hours	
DC Input	24 VDC - 2 A	
DC Connector	5.5 mm x 2.1 mm	
Wired DMX	Yes (via FP1-PWB / FP3-DTL / PWB-2-86)	
CRMX Receiver	Built-in	
BluetoothBridge BTB	No	Built-in
Wireless Protocols	CRMX, UHF	CRMX, UHF, Bluetooth, WiFi
Wireless Range	CRMX/UHF up to 300 m / 330 yds	CRMX/UHF up to 300 m / 330 yds Bluetooth up to 3 m / 3.3 yds
Infrared Control	Yes	
Housing Material	Polycarbonate, metal end caps	
IP Rating	IP65 (only with FP1-SP)	

Ambient Operating Temperature	0 - 40 °C / 32 - 104 °F
Weight	1.35 kg / 3 lbs
Dimensions	1035 mm x Ø 43 mm / 40.7" x Ø 1.7"
Mounting Options	2x M5 thread, 2x TubeHolder (with 2x M5 and 1x 1/4" - 20 UNC thread), 1x TubeStand

*Typical value

RF CHARACTERISTICS FP1

Wireless Modules	EU: UHF*** (863-870MHz)	USA: UHF (917-922.20MHz)	AUS: UHF (922.30-927.50MHz)	SGP: UHF (920.50-924.50MHz)	KOR: UHF (917.9-921.5MHz)
Modulation	FHSS	FHSS	FHSS	FHSS	FHSS
ERP (Transmitter)	<25mW	<25mW	<25mW	<25mW	<25mW
Channel Count	47	53	53	41	10

Wireless Modules	RUS: UHF (868.75-869.12MHz)	JPN: UHF (922.80-926.40MHz)	CRMX (2402-2480MHz)
Modulation	FHSS	FHSS	FHSS
ERP (Transmitter)	<25mW	<25mW	-
Channel Count	6	19	79

***General allocation of frequencies for use by short-range radio applications

RF CHARACTERISTICS FP1-BTB

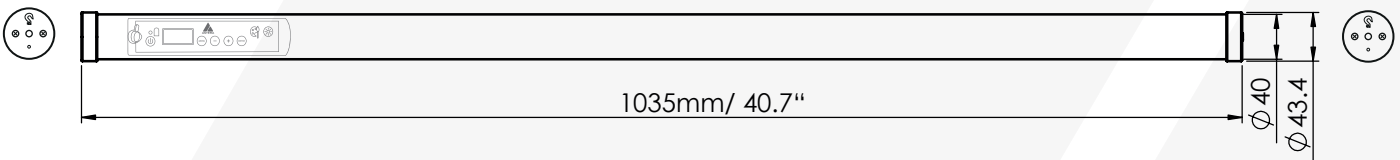


Wireless Modules	EU: UHF*** (863-870MHz)	USA: UHF (917-922.20MHz)	AUS: UHF (922.30-927.50MHz)	SGP: UHF (920.50-924.50MHz)	KOR: UHF (917.9-921.5MHz)
Modulation	FHSS	FHSS	FHSS	FHSS	FHSS
ERP (Transmitter)	<25mW	<25mW	<25mW	<25mW	<25mW
Channel Count	47	53	53	41	10

Wireless Modules	RUS: UHF (868.75-869.12MHz)	JPN: UHF (922.80-926.40MHz)	CRMX (2402-2480MHz)	Bluetooth 5.0 LE (2402-2480MHz)	WiFi (2412-2472MHz)
Modulation	FHSS	FHSS	FHSS	FHSS	DSSS, OFDM
ERP (Transmitter)	<25mW	<25mW	-	10mW (BLE)	<100mW
Channel Count	6	19	79	40	13

***General allocation of frequencies for use by short-range radio applications

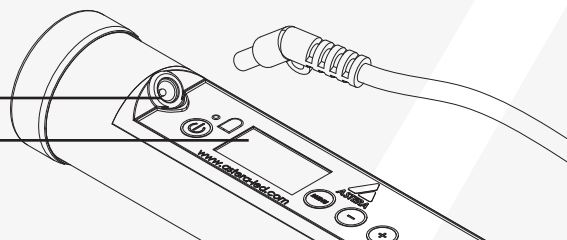
DRAWINGS



CONNECTIONS + DISPLAY

Wired Data Connection

Backside Display



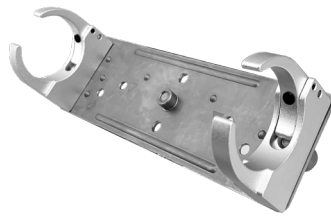
ACCESSORIES

FEATURES

TubeHolder
AX1-H



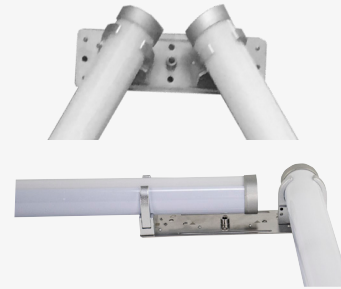
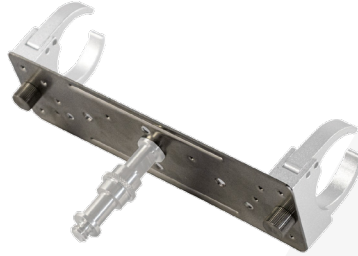
Fix tubes via screws or BabyPin to walls and structures



WingPlate
AX1-WP



Hang one Tube with BabyPin or connect several Tubes



CrossPlate
AX1-CP



Holds up to 4 Tubes



BabyPin
FP1-BLT



EyeBolt
FP1-EBLT



Waterproof Protection Cover
FP1/2-SP



Titan Power/Data Combination Cable
5/10/15 m

FP1-PWB-CAB-5/10/15



Extension Cable for Helios, Titan, Hyperion Tube
5m

FP1-EXC



Power Supply for Titan and Helios Tube
FP1-CHR



TubeStand
AX1-STD



Softbag for Titan Tube
FP1-SB



Accessories by DoPchoice

SNAPBAG 1 TITAN Tube

SBAAT41



SNAPBAG 3 TITAN Tubes

SBAAT42



SNAPGRID 40° TITAN Single Tube

SGAT41W40



Titan Tube Kit

FP1-SET



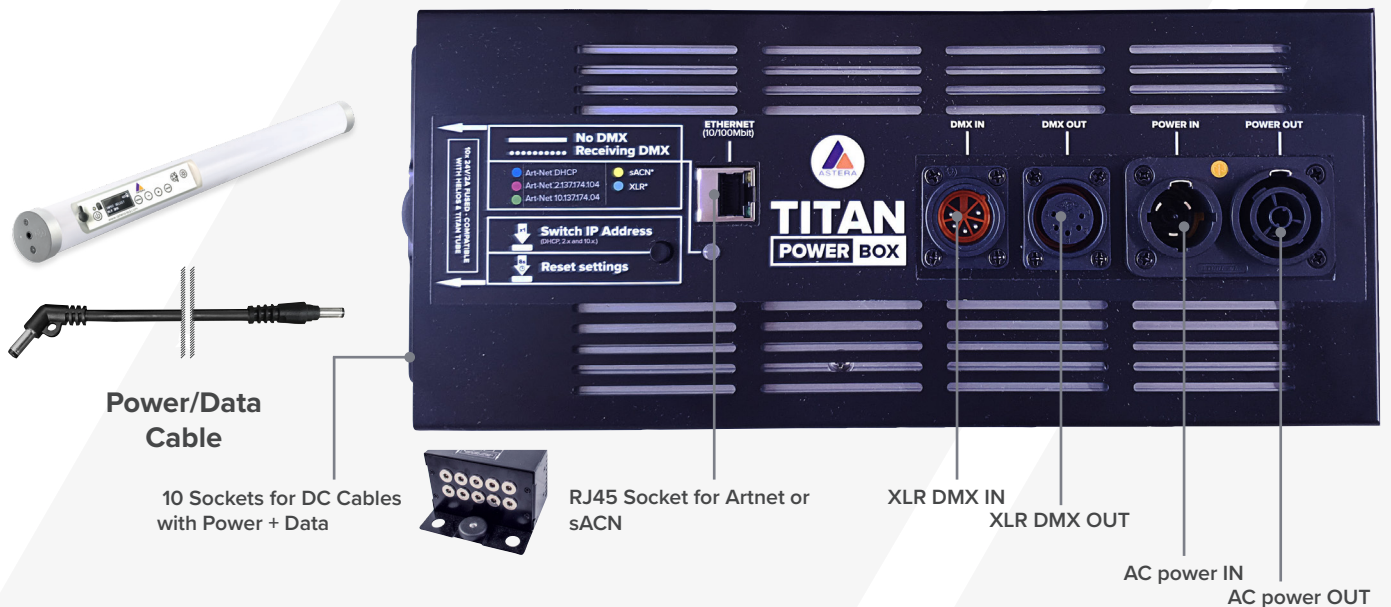
Weight (empty): 12 kg / 26.5 lbs
Weight (full): 35 kg / 77.2 lbs

Dimensions
1140 mm x 442.5 mm x 149.5 mm /
44.88" x 17.42" x 5.89"

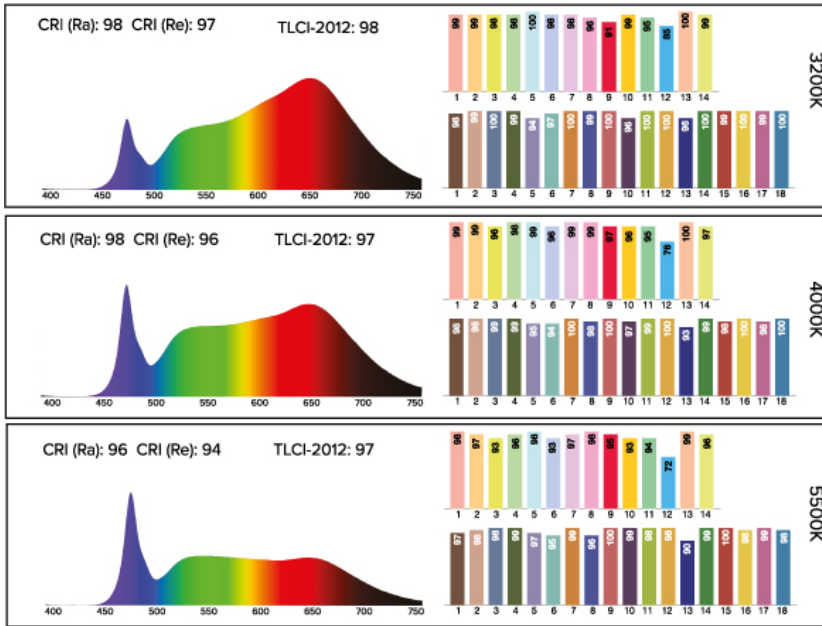
Included in the Kit

8x FP1 Titan Tube (FP1)
1x PowerBox (FP1-PWB)
16x EyeBolts (FP1-EBLT)
16x Holder (AX1-H)
16x Babypin (AX1-BLT)
8x Stand (AX1-STD)
1x Charging Case for Titan Tube (FP1-CHRCSE)
1x PowerCON TRUE1 cable
8x DC Cables
8x Waterproof covers for charging port (FP1/2-SP)
Optional: 8x WingPlates (AX1-WP)

CHARGING & CONNECTING



TYPICAL SPECTRAS



*Typical values